



**MDaemon<sup>®</sup>**

*and*

***Active Directory***

*Adding, Changing and Deleting Accounts,  
Compiling Addresses for Mail Lists*

Alt-N Technologies, Ltd.  
2550 SW Grapevine Parkway  
Grapevine, TX 76051  
Tel: (817) 601-3222  
<http://www.altn.com>

Copyright 2006 Alt-N Technologies.

## Table of Contents

<b>Abstract</b>	<b>3</b>
About MDAemon and Active Directory . . . . .	3
About MDAemon . . . . .	3
About Alt-N Technologies . . . . .	3
<b>MDAemon and Active Directory</b>	<b>4</b>
Directory Services . . . . .	4
MDAemon's Use of Active Directory . . . . .	4
Account Management Functions . . . . .	5
Mailing List Functions . . . . .	8
<b>Summary</b>	<b>9</b>

## **Abstract**

### **About MDAemon and Active Directory**

Beginning with Version 9.0, MDAemon can monitor Active Directory for account data and queries for mailing list members. All of MDAemon's access to Active Directory is one way from Active Directory to MDAemon—MDAemon in no way alters the Active Directory schema files. MDAemon's Account Manager monitors Active Directory, automatically mirroring additions and changes. MDAemon also provides options for handling deleted accounts. For mailing lists, MDAemon can query Active Directory for email addresses of list members.

### **About MDAemon**

MDAemon is a professional messaging platform with intelligent defaults, making it easy to use for beginners with little or no experience. MDAemon 9.0 comes with servers for SMTP, POP, IMAP, Web Mail, DomainPOP, MultipPOP, SynchML, Web Administration, Mailing Lists, Instant Messaging, Catalogs and Gateways. An optional and free LDAP server is also available for account data.

MDAemon is an industry leader in ease-of-use and security. While its default settings create an easy entry point for beginners, MDAemon's many configuration options provide fine-tuning controls for professionals. Also, MDAemon comes with multiple security tools for detecting spam and unauthorized access. AntiVirus for MDAemon, a separate plug-in, is available for antivirus security.

More information about MDAemon is available on the Alt-N web site:  
<http://www.altn.com/>

### **About Alt-N Technologies**

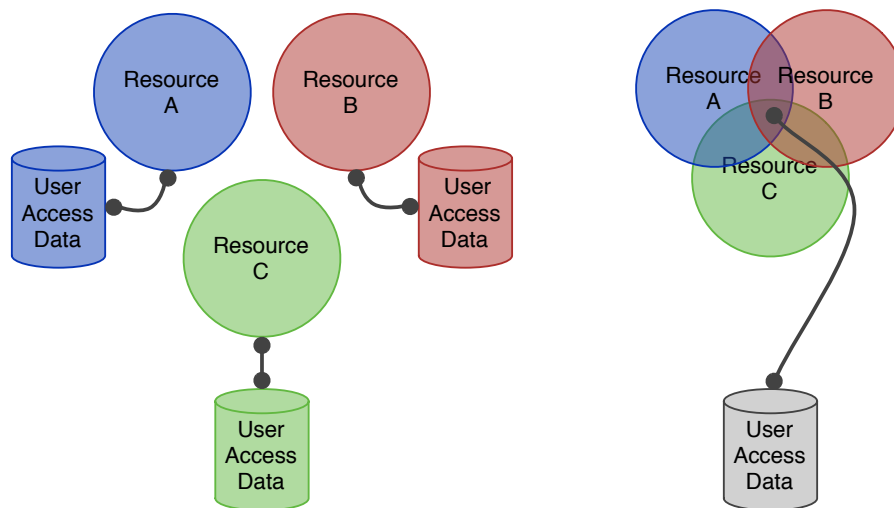
Alt-N Technologies offers the international marketplace innovative communications software with professional features and beginner level ease-of-use. Our flagship product, MDAemon, provides a complete suite of secure and standards-compliant messaging and collaborative capabilities.

# MDaemon and Active Directory

## Directory Services

Active Directory (AD) provides directory services for all current Microsoft Windows products. Among other functions, directory services enable you to consolidate user access data for multiple network resources such as printers, disk storage and applications.

This simplified illustration shows resource access requirements with and without the implementation of directory services.



Without directory services, many network resources have separate directories, each with its database of ID's, passwords and privileges, for example. By using AD, this information can be combined in one shared directory where additions, changes and deletions apply across network resources, including third-party applications with Active Directory awareness, such as MDAemon.

Complete information about the functions and usage of Active Directory is available on the Microsoft website.

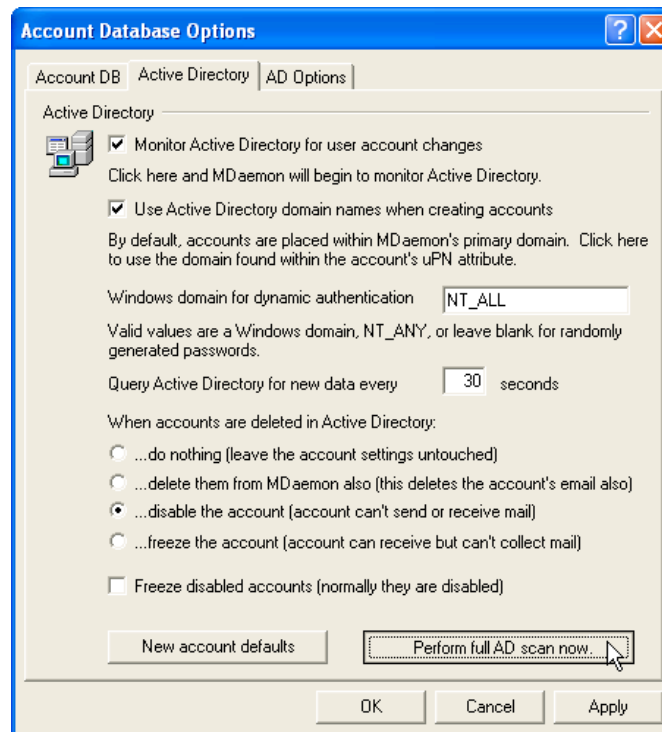
## MDaemon's Use of Active Directory

MDaemon can use Active Directory to:

- Manage account additions, changes and deletions.
- Compile email addresses for mailing lists.

## Account Management Functions

For account management, MDAemon checks Active Directory at a user-specified interval for account additions, changes, and deletions. When it detects a new, changed or deleted Active Directory account, MDAemon automatically takes appropriate action.



**Adding Accounts:** When a new user account is added to Active Directory an associated email account will be automatically created within MDAemon. This email account is created using and is placed within MDAemon's primary domain. MDAemon can also create and place email accounts into other domains by reading a domain value from an Active Directory user account's properties. MDAemon self-configures new domains as required.

**Changing Accounts:** When an account is disabled in Active Directory the associated email account within MDAemon is also disabled.

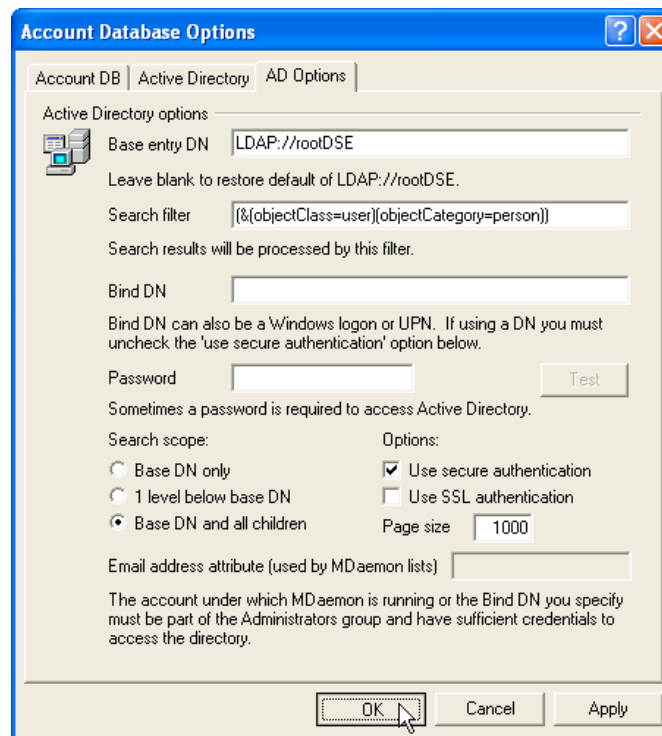
**Deleting Accounts:** When an account is deleted in Active Directory MDAemon can be configured to:

- do nothing.
- delete and remove the associated mail account
- disable the associated mail account (it can no longer send or receive mail)
- freeze the associated mail account (it can receive mail but can not be accessed by mail clients)

**Managing Passwords:** When MDAemon creates email accounts for Active Directory users it uses a technique called Dynamic Authentication to deal with passwords. This means that the user uses his Active Directory password to access his MDAemon email account. Alternatively, explicit passwords can be configured and used at any time.

**Downtime Monitoring:** Active Directory monitoring tracks all changes even when MDAemon is shut down. When restarted, MDAemon will apply all of the stored changes.

**Advanced Usage:** Active Directory monitoring works out of the box. However, you can configure the Active Directory server to monitor and map Active Directory attributes directly to MDAemon email account properties to suit your specific requirements. The ActiveDS.dat file explains how MDAemon maps Active Directory attributes using a simple script style language.



An ActiveDS.dat sample script is on the next page.

## ActiveDS.dat Sample Script

```
; Active Directory configuration

[Templates]
;
; Use AD attributes inside % chars to map that attribute to one of the following
; MDAemon account fields:
;
;   FullName - MDAemon account's full name field
;   Mailbox   - MDAemon account's mailbox field
;               Everything to the right of the first '@' character mapped into this field
;               will be ignored.
;   NTAccount - MDAemon account's network logon (for dynamic authentication)
;               Note: if you are using uPNLogon=Yes do not map anything to the
;               NTAccount field.
;   Comments  - MDAemon account's comment field
;
; You can construct templates using any combination of AD attribute names. For
; example, "FullName" by default is created using "%cn%" which is the AD attribute
; for the full name. You could achieve the same result by using "%givenName% %sn%"
; instead.
;
FullName=%cn%
Mailbox=%userPrincipalName%
NTAccount=%SAMAccountName%
Comments=%description%
// Uncomment this template to specify and create an alias for the new account
# Alias=%givenName%_%sn%
```

## Mailing List Functions

An MDAemon Mailing List can be configured to gather its email addresses from Active Directory. Some knowledge of Active Directory queries is necessary to configure this function.

MDaemon can be configured to query your Active Directory server using the same method employed by account monitoring. You must additionally provide an Active Directory attribute where the email address can be found. MDAemon will query the server specified here using the parameters specified here for all occurrences of the given attribute. The value within that attribute is expected to be an email address in the form <localpart>@<domain>

Mailing List Editor - musicfan@poboxes.shacknet.nu

Support Files | Notifications | Security | Digest | Public Folder  
Options | Members | Routing | Subscriptions | ODBC | AD

Active Directory options

Base entry DN   
Specify a Base DN to pull list members from Active Directory.

Search filter   
Search results will be processed by this filter.

Bind DN   
Bind DN can also be a Windows logon or UPN. If using a DN you must uncheck the 'use secure authentication' option below.

Password  Test

Sometimes a password is required to access Active Directory.

Search scope: Options:  
 Base DN only  Use secure authentication  
 1 level below base DN  Use SSL authentication  
 Base DN and all children Page size

Email address attribute (used by MDAemon lists)   
The account under which MDAemon is running or the Bind DN you specify must be part of the Administrators group and have sufficient credentials to access the directory.

OK Cancel



## Summary

The Active Directory functions of MDAemon allow you to centralize account management and mailing list creation by using the existing facilities of your Windows network.

Active Directory monitoring for account management operates out of the box. It adds and changes MDAemon accounts based on changes in Active Directory. Account monitoring also provides options for handling deleted accounts. Plus, MDAemon can be configured to use Active Directory account passwords.

Mailing list access queries Active Directory for email addresses when creating mailing lists. The creation of mailing lists requires some knowledge of Active Directory queries.